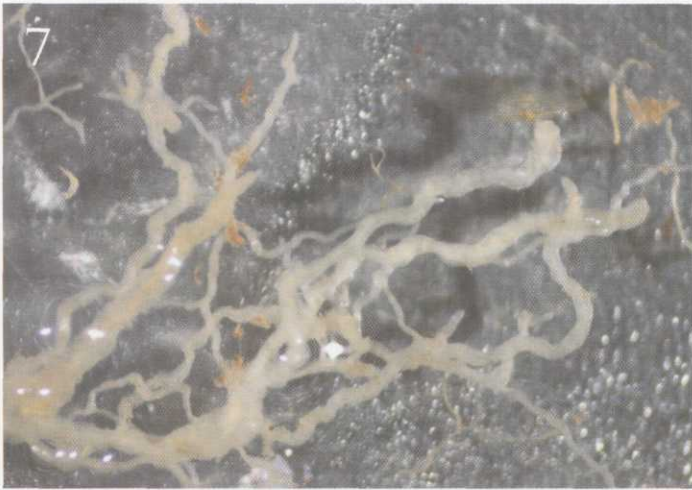


# Contents

July-August 2005 Volume 43, Number 4



**1 Phosphorus Under Fire**  
Will the increasing number of fertilizer restrictions affect your maintenance program?  
BY BOB VAVREK

**7 Defining the Nature of Creeping Bentgrass Root Diseases**  
Research directed toward accurate diagnosis and management of putting green diseases.  
BY LANE P. TREDWAY  
AND JAMES P. KERNS



**10 Improving Dollar-Spot Resistance in Creeping Bentgrass**  
Rutgers University scientists investigate using colonial bentgrasses to incorporate dollar-spot resistance into creeping bentgrass.  
BY FAITH C. BELANGER,  
STACY A. BONOS, AND  
WILLIAM A. MEYER



**12 Building a New Driving Range Tee? Super Size It!**  
Driving ranges once were an afterthought, but practice has become popular, and courses are responding with improved facilities.  
BY DAVID A. OATIS

**16 New Tools for the Golf Course Superintendent**  
A practical user's guide to the sulfonyleurea herbicides.  
BY RENEE KEESE, DAVID SPAK,  
AND CHRISTIAN SAIN



**19 Managing Runoff with Constructed Wetlands**  
Purdue University research demonstrates how constructed wetlands can be used to limit runoff.  
BY Z. J. REICHER,  
E. A. KOHLER, V. L. POOLE,  
AND R. F. TURCO

**25 Still on Top**  
Ten years after participating in the Audubon Cooperative Sanctuary Program.  
BY JEAN MACKAY  
AND SHAWN WILLIAMS

**27 News Notes**

**28 Don't Lose the Feeling**  
Make sure high-tech gadgets and administrative duties don't get in the way of growing grass.  
BY JIM SKORULSKI

**30 Turf Twisters**



**USGA President**  
Fred S. Ridley

**Green Section Committee Chairman**  
Bruce C. Richards  
12202 NE 31st Place  
Bellevue, WA 98005

**Executive Director**  
David B. Fay

**Editor**  
James T. Snow

**Associate Editor**  
Kimberly S. Erusha, Ph.D.

**Director of Communications**  
Marty Parkes

## Cover Photo

Excess weed and algae growth in ponds and lakes detracts from the overall appearance of the course.